



Protecting Your Human Assets During Emergency

## MA 2000 Series Mixer Amplifier



The MA 2000 Series is the range of mixer amplifiers that is able to handle 4 microphone inputs and auxiliary inputs, making the MA 2000 Series suitable for small and medium scale public address applications, such as mosque, office, restaurants or pubs ,fitness clubs, auditoriums, warehouses, factories and retail stores.

The MA 2000 series comes with individual input gain controls with a master volume control. Bass and Treble controls are provided for the user's equalisation preference.

The MA 2000 series is integrated with voice muting function for Mic 1, thus giving it the highest priority to override other sources during emergency situation. Able to operate off mains or an external battery, the MA 2000 Series is a viable solution for any mobile application from a family day sports event to a large-scale garden party.

The MA 2000 Series consists of 5 different models each tailoring to the customers output power requirements and speaker zone; MA 2006 (60W without zone), MA 2015 (150W without zone ), MA 2025 (250W without zone),MA 2415 (150W with 4 zones) and MA 2425 (250W with 4 zones).

- 4 microphone inputs with user selectable phantom power.
- Individual gain control on all 4 microphone inputs.
- Short circuit and over current protection with resettable fuse cut-off  
In the event of a short circuit, just rectify the line and reset the amplifier and normal operation will resume.
- Voice activated muting function enables MIC 1 to override all the inputs.
- Bass and Treble Master tone control for equalization and audio tuning.
- Dual mode power supply of either AC mains or DC battery supply.



60W Mixer Amplifier MA 2006

### Technical Specifications

MA 2006		
Rated Output	60 W at 100 V	
Frequency Response	40 Hz - 20 kHz	
Input Sensitivity	MIC 1	6.3mm Phone socket, 0 dB/-60 dB, 600 $\Omega$ Balanced (with voice activated muting function and phantom power dip switch)
	MIC 2 - 4	6.3mm Phone socket, 0 dB/-60 dB, 600 $\Omega$ Balanced (with phantom power dip switch)
	AUX 1 & 2	RCA connector, -20 dB 10k $\Omega$ Stereo input
REC OUT	RCA connector, 0 dB 600 $\Omega$ unbalanced Stereo output	
Zone Selection	No Zone selection	
Protection Circuit	Over current and short circuit protection.	
AC Power Consumption	85 W	
DC Power Supply	24 V , 2.3 A	
Dimensions (W x H x D)	430 x 90 x 250 mm	
Weight	6.6 kg	



150W Mixer Amplifier MA 2015

### Technical Specifications

MA 2015		
Rated Output	150 W at 100 V	
Frequency Response	40 Hz - 20 kHz	
Input Sensitivity	MIC 1	6.3mm Phone socket, 0 dB/-60 dB, 600 $\Omega$ Balanced (with voice activated muting function and phantom power dip switch)
	MIC 2 - 4	6.3mm Phone socket, 0 dB/-60 dB, 600 $\Omega$ Balanced (with phantom power dip switch)
	AUX 1 & 2	RCA connector, -20 dB 10k $\Omega$ Stereo input
REC OUT	RCA connector, 0 dB 600 $\Omega$ unbalanced Stereo output	
Zone Selection	No Zone selection	
Protection Circuit	Over current and short circuit protection.	
AC Power Consumption	210 W	
DC Power Supply	24 V , 5.7 A	
Dimensions (W x H x D)	430 x 90 x 250 mm	
Weight	8.2 kg	



250W Mixer Amplifier MA 2025

### Technical Specifications

MA 2025		
Rated Output	250 W at 100 V	
Frequency Response	40 Hz - 20 kHz	
Input Sensitivity	MIC 1	6.3mm Phone socket, 0 dB/-60 dB, 600 $\Omega$ Balanced (with voice activated muting function and phantom power dip switch)
	MIC 2 - 4	6.3mm Phone socket, 0 dB/-60 dB, 600 $\Omega$ Balanced (with phantom power dip switch)
	AUX 1 & 2	RCA connector, -20 dB 10k $\Omega$ Stereo input
REC OUT	RCA connector, 0 dB 600 $\Omega$ unbalanced Stereo output	
Zone Selection	No Zone selection	
Protection Circuit	Over current and short circuit protection.	
AC Power Consumption	355 W	
DC Power Supply	24 V , 9.4 A	
Dimensions (W x H x D)	430 x 90 x 250 mm	
Weight	11.2 kg	



150W Mixer Amplifier MA 2415  
- 4 Zone Selection

### Technical Specifications

MA 2415 - 4 Zones		
Rated Output	150 W at 100 V	
Frequency Response	40 Hz - 20 kHz	
Input Sensitivity	MIC 1	6.3mm Phone socket, 0 dB/-60 dB, 600 $\Omega$ Balanced (with voice activated muting function and phantom power dip switch)
	MIC 2 - 4	6.3mm Phone socket, 0 dB/-60 dB, 600 $\Omega$ Balanced (with phantom power dip switch)
	AUX 1 - 3	RCA connector, -20 dB 10k $\Omega$ Stereo input
REC OUT	RCA connector, 0 dB 600 $\Omega$ unbalanced Stereo output	
Zone Selection	4 Zone selection	
Protection Circuit	Over current and short circuit protection.	
AC Power Consumption	210 W	
DC Power Supply	24 V , 5.7 A	
Dimensions (W x H x D)	430 x 90 x 250 mm	
Weight	8.3 kg	



250W Mixer Amplifier MA 2425  
- 4 Zone Selection

### Technical Specifications

MA 2425 - 4 Zones		
Rated Output	250 W at 100 V	
Frequency Response	40 Hz - 20 kHz	
Input Sensitivity	MIC 1	6.3mm Phone socket, 0 dB/-60 dB, 600 $\Omega$ Balanced (with voice activated muting function and phantom power dip switch)
	MIC 2 - 4	6.3mm Phone socket, 0 dB/-60 dB, 600 $\Omega$ Balanced (with phantom power dip switch)
	AUX 1 - 3	RCA connector, -20 dB 10k $\Omega$ Stereo input
REC OUT	RCA connector, 0 dB 600 $\Omega$ unbalanced Stereo output	
Zone Selection	4 Zone selection	
Protection Circuit	Over current and short circuit protection.	
AC Power Consumption	355 W	
DC Power Supply	24 V , 9.4 A	
Dimensions (W x H x D)	430 x 90 x 250 mm	
Weight	11.3 kg	

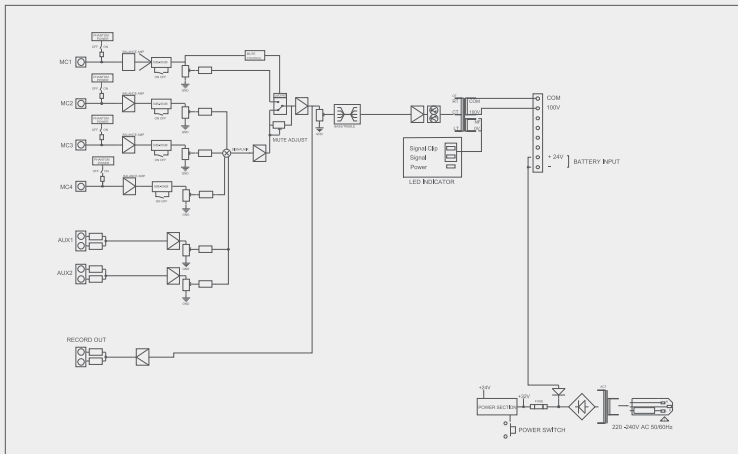


RM 04 Remote Microphone

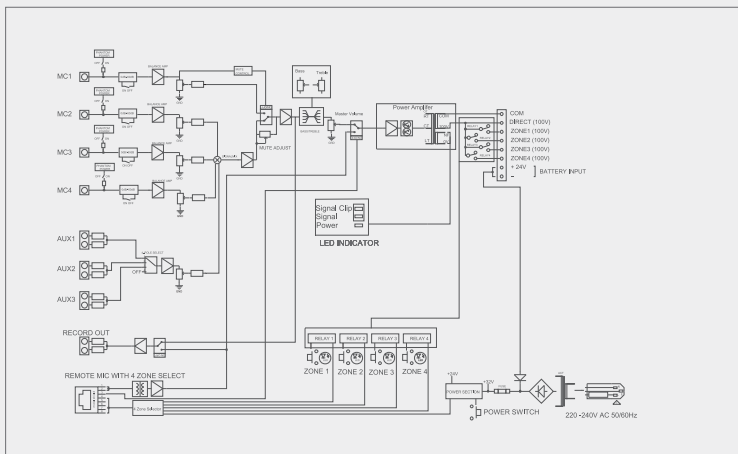
### Technical Specifications

RM 04	
Output sensitivity	0 dB
Frequency Response	20 Hz - 20 kHz
Indicators	Zone selection LED indicator Chime in progress / Talk indicator
Control	4 no. zone selection button (push to select and push to release) Talk button
Chime	Pre - announcement 4 tone ascending Post-announcement 4 tone descending
Material & Finish	ABS, Graphite Black
Dimensions (W x H x D)	105 x 50 x 250 mm
Weight	0.1 kg

### Block Diagram



MA 2006 / MA 2015 / MA 2025

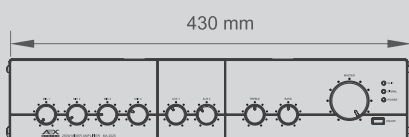


MA 2415 / MA 2425

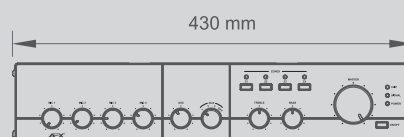
### Engineers' Specifications

The unit shall accept 4 mic level inputs (0dB/-60dB) with user selectable Phantom Power, 2 line level auxiliary stereo inputs (-20dB) for MA 2006, MA 2015 and MA 2025 while there are 3 line level auxiliary stereo inputs (-20dB) for MA 2415 and MA 2425. A 0dB line output shall be provided to facilitate an external recording equipment or to an external audio power amplifier. Frequency response of the unit shall be minimum 40Hz - 20 kHz. The power rating of the unit shall be 60Wrms (MA 2006) / 150Wrms (MA 2015) / 250Wrms (MA 2025) / 150Wrms (MA 2415)

/ 250Wrms (MA 2425). The unit shall include voice activated muting function which enables mic input 1 to override other inputs, individual gain controls for every input and a master volume control with bass & treble control. The unit shall feature short circuit and over current protection with resettable fuse. The unit shall be able to operate off dual power supply modes of either AC mains or DC power. The dimensions shall not exceed 430 x 90 x 250mm.



MA 2006 / MA 2015 / MA 2025



MA 2415 / MA 2425